

La Posada del Valle

La Posada del Valle
Tucson's Historic B&B Inn
1640 N. Campbell Avenue
Tucson, AZ 85719
(520) 885-0883 telephone
(877) 775-8355 toll free

*Close to the University
of Arizona*

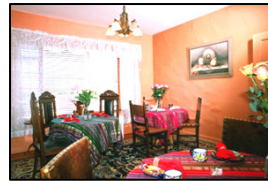
*Close to University
Medical Center*

Weddings

Small Parties



An Historic Joesler Inn



Our Inn was the first bed and breakfast inns established in Tucson and is located in one of Tucson's most historic buildings. Tucson's most famous architect, Josias Joesler, designed the Inn in the 1920's as a near perfect example of early "Santa Fe" style architecture. This style is based upon the haciendas of the southwestern region, using true adobe construction, authentic Spanish tile, large porches, courtyards, breezeways and in our case, beautiful landscaped grounds. Our lush courtyard garden is shaded by citrus trees and enormous date palms and bursts with the color of bougainvillea. Furnished with fine southwestern antiques, original antique artworks and folk art, our Inn is truly the only one its kind in the region.

- Janos Siess, Innkeeper

siessjanoss@gmail.com

TheJoestlerHistoricInn.com